



Custom fabricated stainless steel letters

The entire way finding signage for the British Airways Terminal was fabricated in the shape of an airplane wing with graphics on both sides.

Terminal 4 at JFK

The entire new terminal wayfinding signage completed in 2001.

Signs+Decal was also involved during demolition of the old Terminal and new temporary facilities during 3 years of construction, providing wayfinding signage directing passengers.



3 ft. by 12 ft. long internally illuminated, double-sided signs engineered to cantilever on a single 8 inch diameter stainless steel post

Custom Fabricated Freestanding Directory, Powder Coated



City of Summit

New Jersey



The citywide vehicular signage and wayfinding program consists of a variety of directional, identification, and informational sign elements manufactured and installed by Signs+Decal in 2003.



Special Project – AirTrain

Queens, NY

Project Completion 2008

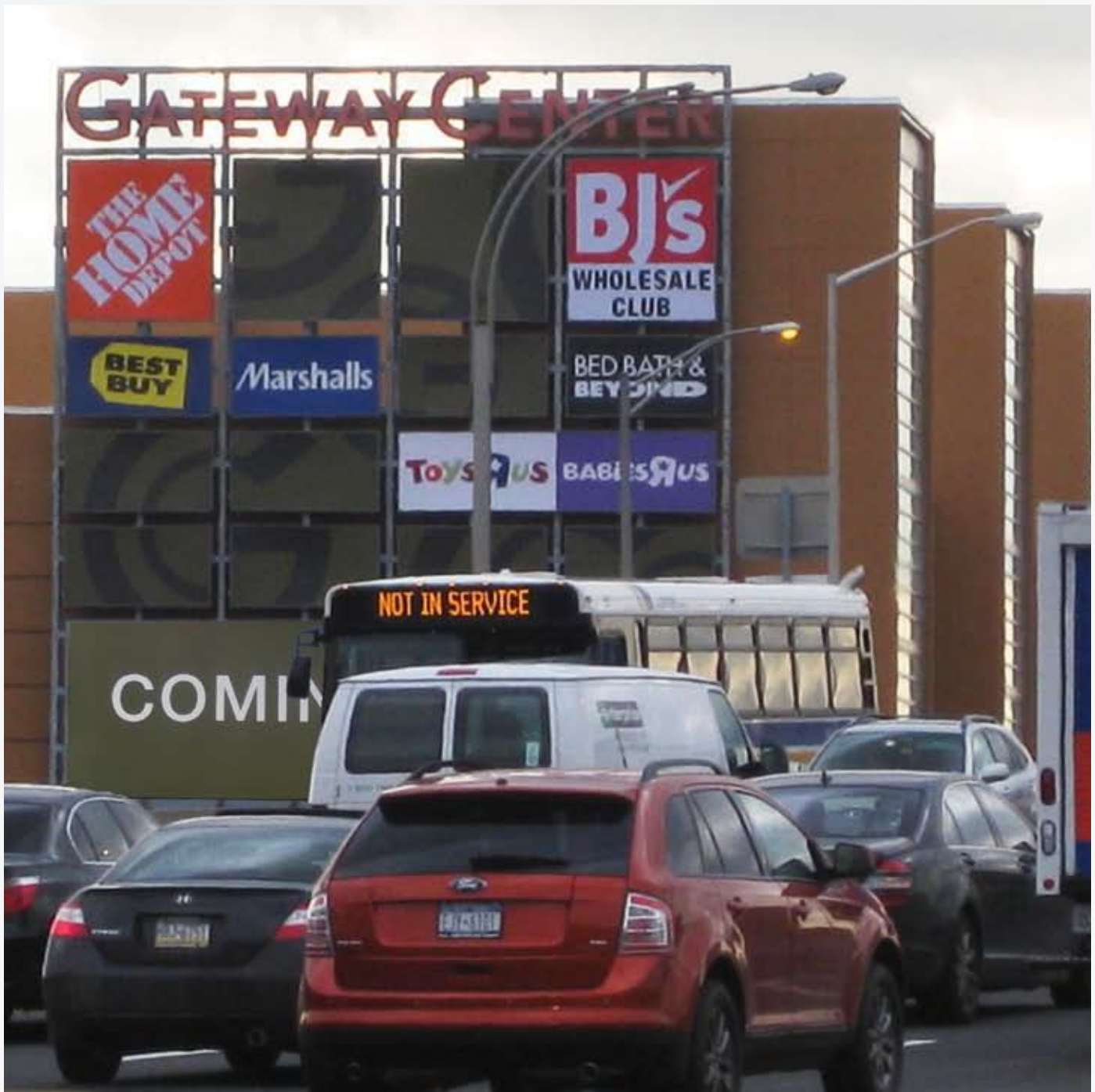


Giant Piano

120 feet by 22 feet overall dimension. Custom fabricated in aluminum, powder coated in black. Each key is 20'-6" X 1'-6" X 4-3/4" deep.

GATEWAY CENTER

at Bronx Terminal Market on Major Deegans Expressway



This highly visible pylon from Freeway is 56 feet high by 48 feet wide overall. Aluminum and steel construction with stretch faces, internally illuminated. Total of 4 pylons on 17 acres Gateway Center shopping mall.

New York City Bus Stand



S+D was contracted to manufacture signage for 3,600 bus shelters, 350 news-stands and 20 public toilets throughout the five boroughs in New York City. This project began in 2007.

Prestigious Projects:

Airport, Transportation, Bus Depot, Parking Garages & Ferry

Some of the more intricate signage projects and complex installations Signs+Decal successfully completed in the last 10 years.

- International Terminal 4 at JFK
 - British Airways Terminal 7 at JFK
 - Howard Beach Subway Station
 - Long Island Railroad
 - Air train at Jamaica Station
 - Penn Station, NY
 - Metro North Stations, 5 Stations on Hudson line
 - PATH at World Trade Center
 - Journal Square, NJ
 - 5 Times Square Subway Signs at both entrances
 - City of Summit, NJ
 - Newark Liberty International Airport, NJ, Terminal B Extension
 - Jersey City Ferry, NJ at Goldman Sachs Building
 - Yellow Garage, 6 floors at JFK
 - Red Garage , 5 floors at JFK
 - Morgan and Largo Stations, Washington DC Metro
 - Amtrak Kiosks, 23 States
 - Dulles International Airport Special Project, Washington DC
 - La Guardia Airport (4 Year Contract)
 - City of White Plains
 - 599 Lexington Ave Subway Station
 - New York City Bus Shelter ID Signs
-



SD

SIGNS+DECAL
CORPORATION

410 Morgan Avenue • Brooklyn, NY 11211 • Tel. 718-486-6400 • Fax. 718-388-3166

www.signsanddecal.com